

# Coppermine River

Unlocking Sediment-Hosted  
Copper in Canada's North





## Founding Team



### **Sean Zubick** Executive Chairman & CEO

Sean Zubick is an accomplished entrepreneur and investor with a proven ability to build and scale transformative ventures. As a founder of Palisade Global Investments (2012–2019), a private offshore merchant bank specializing in commodities, he grew a \$1M investment into a \$700M portfolio. During this period, Sean co-founded New Found Gold Corp (NFG.V / NYSE: NFGC) that reached \$2b in market capitalization post IPO and GoldSpot Discoveries (SPOT.V), a pioneering AI-driven mineral exploration company, creating substantial value in the resource sector which was acquired by ALS for \$25m. In 2021, Sean launched Carbon6 Technologies, a SaaS private equity roll-up, scaling it to \$45M in ARR and exiting in 2025 for \$210M. With \$250M raised across his startups and over \$3B in exits and liquidity, Sean now leads his family office, invests across diverse industries, and mentors emerging entrepreneurs, bringing his strategic expertise to our team.

### **Scott Close** VP Exploration, M.Sc P.Geo

Scott Close is a distinguished exploration geologist with a structural geology degree from Vancouver (early 2000s) and over 20 years of experience in mineral exploration. He spearheaded field programs and project generation for NovaGold in British Columbia, collaborating with Teck, before leading Romios Gold to a 5X value increase in three years, managing \$20M and a 50-person team. As founder of Ethos Geological, Scott developed a consulting team that supported over 40 junior and mid-tier mining clients globally with exploration, drilling, and resource modeling. A Qualified Person (QP) and author of over 20 NI 43-101 technical reports, Scott specializes in precious and base metals, leveraging expertise in logistics, big data, geochemistry, and geospatial AI. Mentored by luminaries like Sillitoe and Goldfarb, he drives innovation in mineral discovery and has co-developed technologies such as onXmaps, Map.Life, and MineAR, bringing cutting-edge solutions to our team.



**Thomas Woolrych** Economic Geologist & Portfolio Manager

Thomas has over 20 years of international experience across Europe, Australia, Asia, and Africa. At Deutsche Rohstoff, he leads business development and portfolio management, focusing on discovery investing ("geological alpha") and commodity cycles ("commodity beta"). He has held key roles at Fugro, Blackthorn Resources, Nzuri Copper, and BHP Billiton, and is a founder/director at Group 11 Exploration and technical advisor to Pallas Resources. Thomas holds a BSc in Geology (Hons) and a Graduate Diploma in Science Communication from ANU, and has published both peer-reviewed and popular geoscience content.



**Jason Kosec** Structural Geologist, Corporate Development, Serial Entrepreneur

Jason Kosec has nearly ten years of experience in all facets of mineral exploration, mine development, investor relations, and capital markets. Upon completing his undergraduate degree in Geology at Western University and a Masters in Earth and Energy Resources at Queens University, Mr. Kosec worked as a Project Geologist at Trelawney Mining and Exploration, which was subsequently sold in 2012 to IAMGOLD for C\$608 million. Mr. Kosec then moved on to work as an Exploration Geologist at a number of IAMGOLD properties and in early 2015 was recruited to join the Barkerville Gold Mines team as Sr. Geologist where he was appointed Chief Mine Geologist in 2016. In late 2017 Mr. Kosec took on the role of VP Corporate Development, which ultimately led to the sale of Barkerville Gold Mines to Osisko Gold Royalties in 2019 for C\$338 million.

## Quick Facts

- One of the largest emerging sedimentary copper-silver districts in the world
- Centrally-located, wholly-owned 1400 km<sup>2</sup> project area
- Hope Lake Airstrip (on site): 60 km from Kugluktuk, 650 km from Yellowknife, Cargo fixed wing capable
- Three prominent targets to date: Dixon, Strike & Coronation
- Structure hosted mineralization:
  - Drilled: 3.05m @ 2.69% Cu, 9.95 g/t Au in 13m @ 0.73% Cu, 2.8 g/t Ag, CR25-07
  - Surface samples over 25 km: 1 - 40% Cu, up to 209 g/t Ag
- Drilled Sedimentary hosted mineralization:
  - 5.23m @ 1.08%, 1m @ 1.36%, 1m @ 1.07%, 0.7m @ 1.95%, 0.98m @ 1.58% within 47m @ 0.40% Cu, 1.22 g/t Ag, CR25-03
  - 1.0m 3.04% Cu, 5.1 g/t Ag in 28m @ 0.57% Cu, 1.86 g/t Ag, CR15-09
  - Shallow targets intersected over multiple kilometers

➤ Over 600km<sup>2</sup> of sediment-hosted, manto and IOA/IOCG copper/silver potential



English Expedition Shipwrecked Seeking Copper Lodes

Official Survey Locates Native Copper and Mineralized Lodes

12 lb Copper Nugget

Geological Mapping

First Claims Staked

**3rd LARGEST STAKING  
RUSH IN CANADA'S  
MINING HISTORY**

40,000 Claims

*Exploration stalls:  
difficult access and low  
tonnage in veins*

**Cominco Sed Cu**

**Tundra Copper; Initial Staking**

Tundra (Kaizen); Staking + Drilling

*NU Gov't Suspends Exploration Permits*

*COVID-19*

*NU Gov't Opens Exploration*

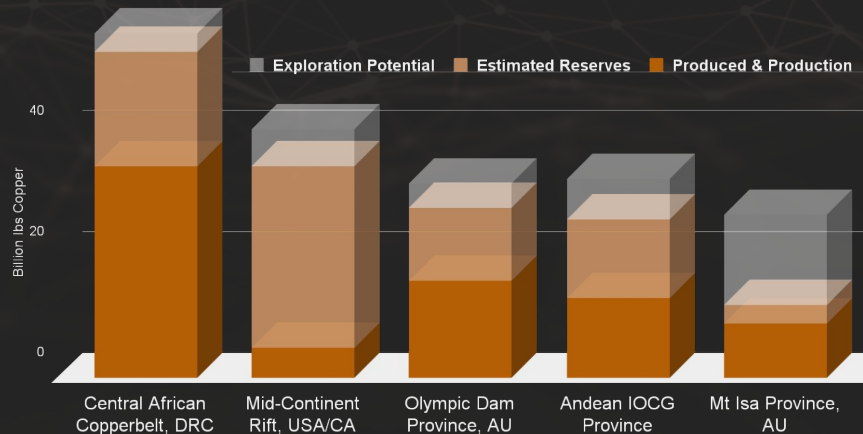
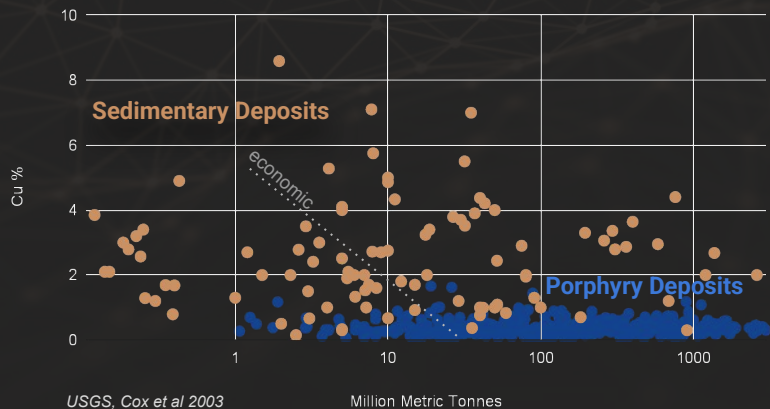
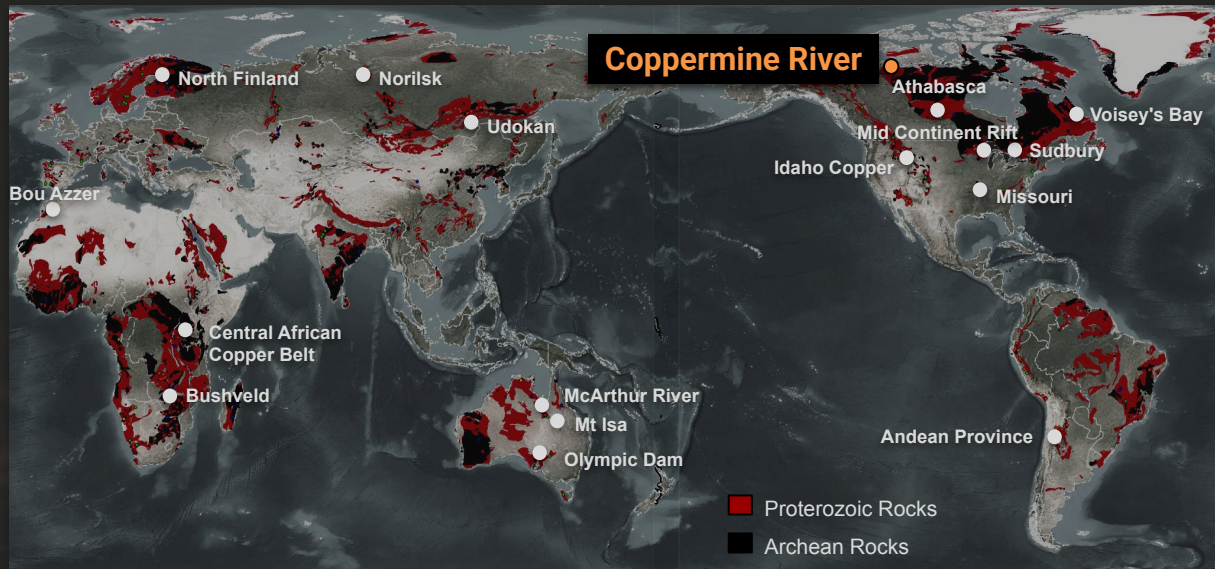
Tundra Renews Exploration

**NEW COPPER  
RUSH**

1719 1821 1902 1913 1929 1951 **1967** 1992 2011 2015 2024 **2025**

# Large Copper Systems

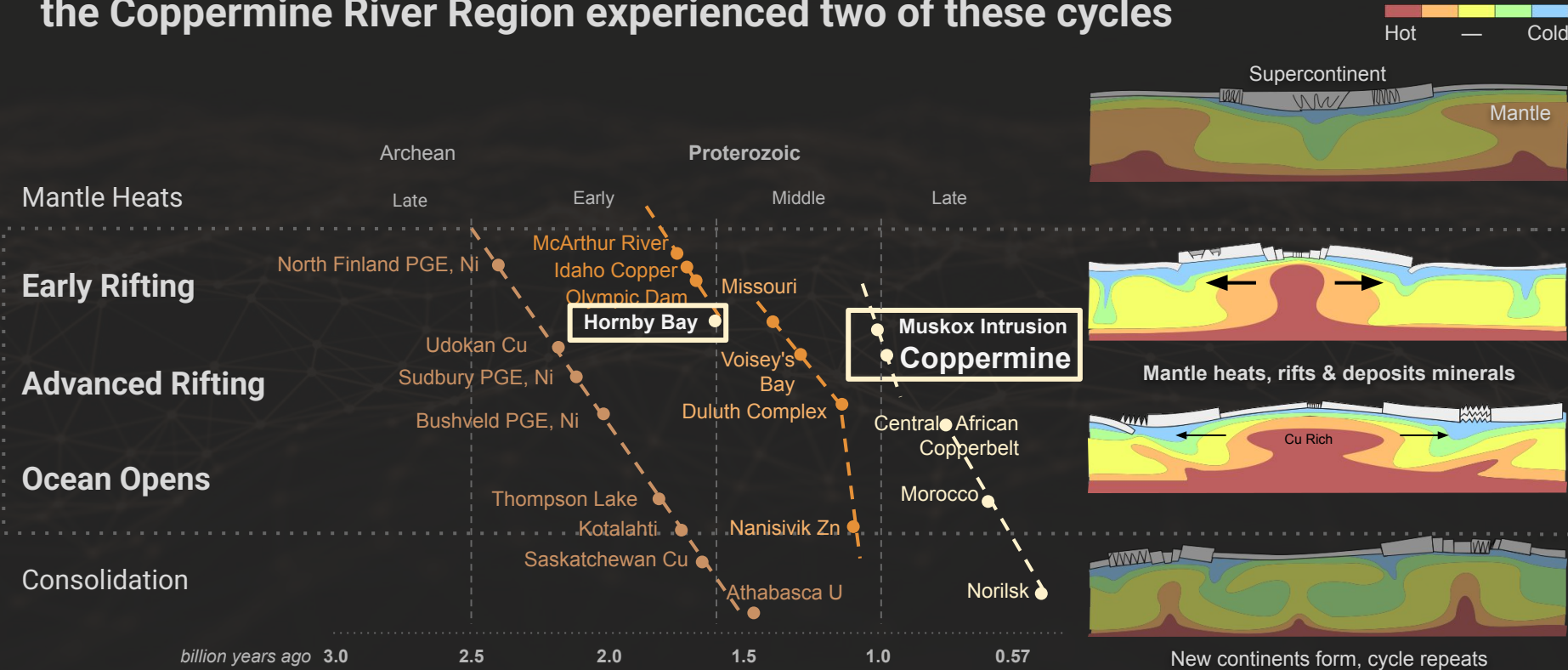
We're exploring the largest mineralized systems in the world, a group responsible for over half of the world's mineral deposits





# Proterozoic Crustal Rifting Creates Large Copper Districts

Three rift cycles are responsible for the majority of metals  
the Coppermine River Region experienced two of these cycles

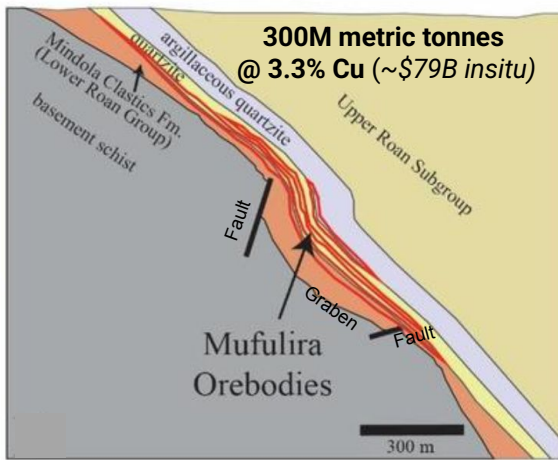
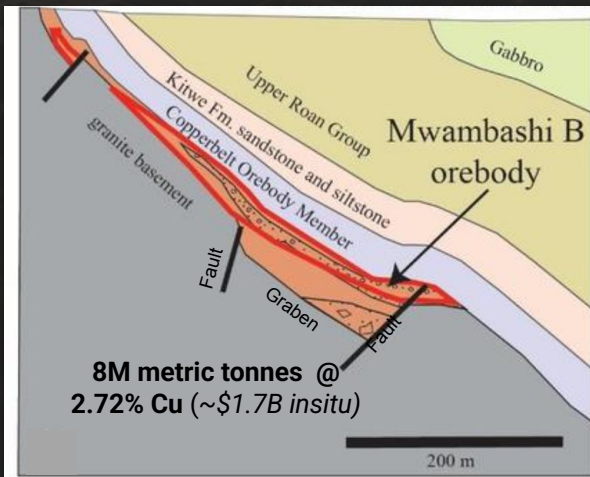




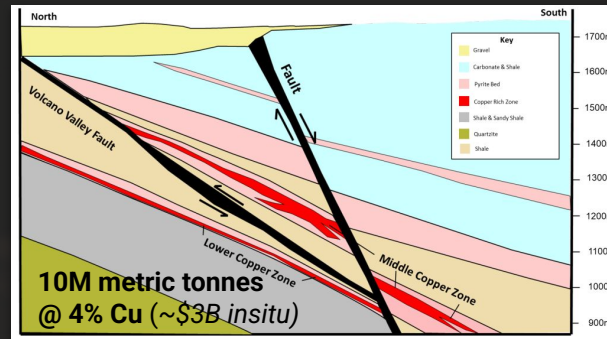
## Case Studies: Proterozoic Stratiform Copper

Coppermine River displays similar geology, structure and mineralization styles with the Central African Copperbelt and other prominent sedimentary- hosted districts

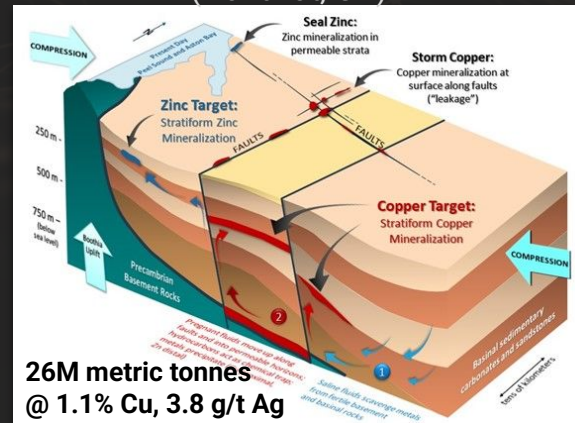
### Central African & Zambian copper belts- Mwambashi & Mufulira



### Sandfire Resources, Black Butte (MT, USA)



### Aston Bay, Storm Copper (Nunavut, CA)





# Coppermine Regional Overview

## Infrastructure

- ✓ Northwest Passage Marine Traffic
- ✓ Commercial Airstrips

## 341 Mineral Occurrences

## 15 Historical Copper Resources\*

## 2025 Combined Activity

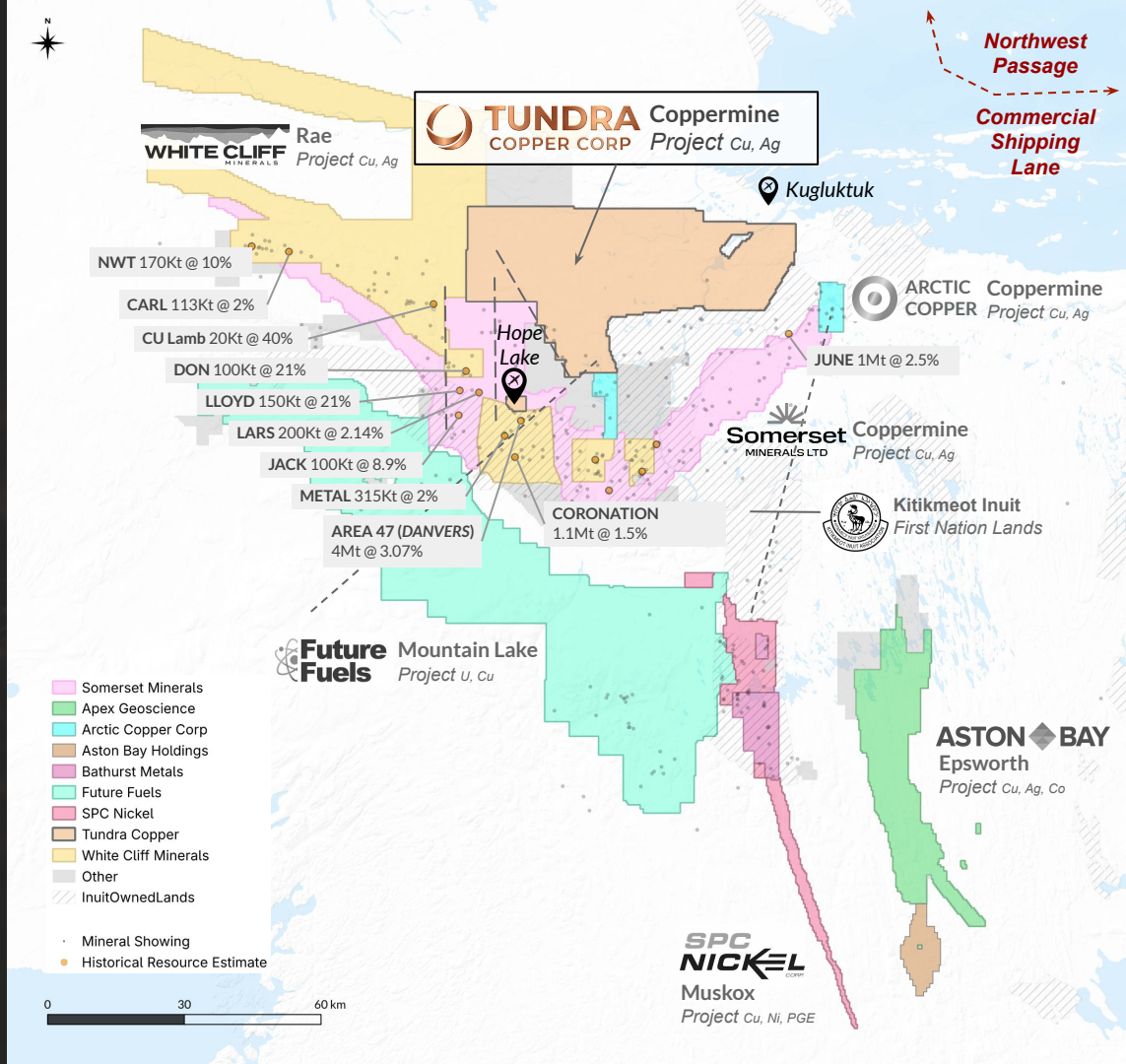
- ✓ Approx. 9,000m Drilled
- ✓ Airborne Geophysics

## Recent Public Announcements

### White Cliff Minerals ASX:WCN

- 175m @ 2.5% Cu
- 58m @ 3.08% Cu
- 63m @ 2.23% Cu

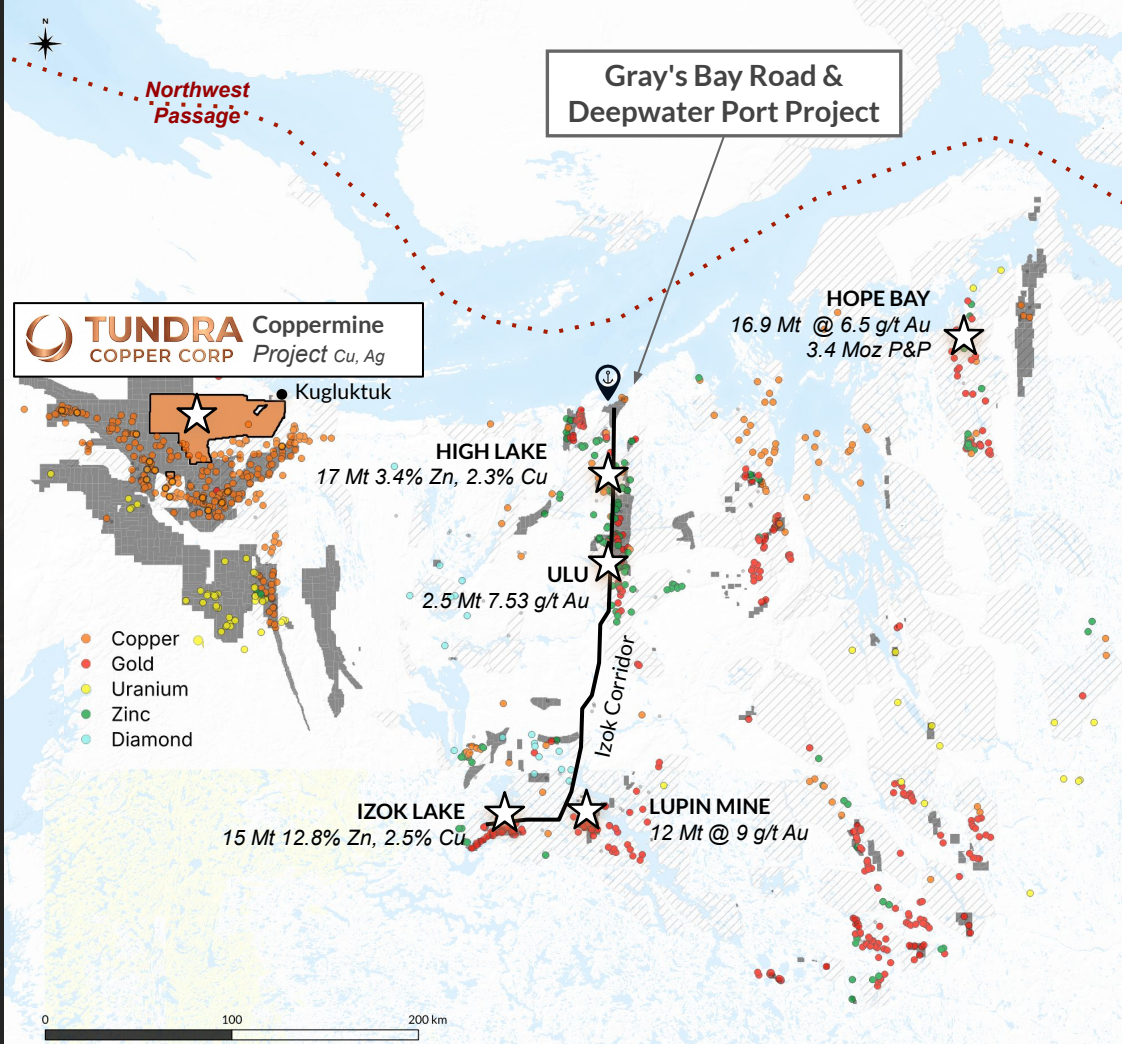
\* Historical Resources are non NI 43-101 compliant and have not demonstrated economic viability





## Why Nunavut?

- ✓ **Numerous showings, past and producing mines**
- ✓ **Greatly underexplored**
- ✓ **Increasing Accessibility**  
*Climate change has opened Northwest Passage shipping lanes, increasing accessibility*
- ✓ **Jan 2024: Canada grants Nunavut control of resources**  
*Provides the right to collect royalties that would otherwise go to the federal government, will to boost exploration and development*
- ✓ **\$246M invested in 2024**  
*4.2% increase over 2023, 100% increase over 2014*
- ✓ **Gray's Bay Road & Port Project (proposed)**



**FCg: Coronation Gabbro Sills**  
~0.72 Ma, 50m thick | Franklin Large Igneous Province  
Cream-coloured & orange-brown weathering sideritic to ankeritic dolostone

**RGa: Aok Formation**  
0.5km thick | Extensive Carbonate Shelf  
Cream-coloured & orange-brown weathering sideritic to ankeritic dolostone

**RGn: Nelson Head Formation**  
0.5km thick | Prograding Marine Delta  
Laminated black and pyritic mudstone-grading to quartzarenite, minor conglomerate

**RGm: Mikkelsen Islands Formation**  
0.5km thick | Sub-Intertidal laminated reddish to cream-colored pale grey cherty aphanitic dolostone with stromatolites

**RG: Escape Rapids Formation**  
0.5km thick | Deep to Shallow marine | **Bn, Cc, Cp**  
RGeb: subtidal-tidal, minor conglomerate, dolostone, stromatolites  
RGEn: laminated deeper marine siltstone  
RGeh: Storm and ripple cross laminated siltstone

RAE GROUP, 1 - 0.54 Ma

ESCAPE RAPIDS

**Hcf: Husky Creek Formation**  
1.3km thick | Terrestrial Redbeds | **Native Cu, Cc**  
Crossbedded red sand and siltstones, minor intercalated basalt flows

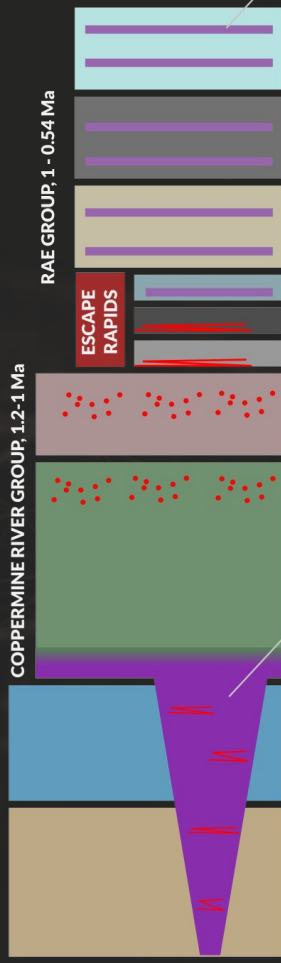
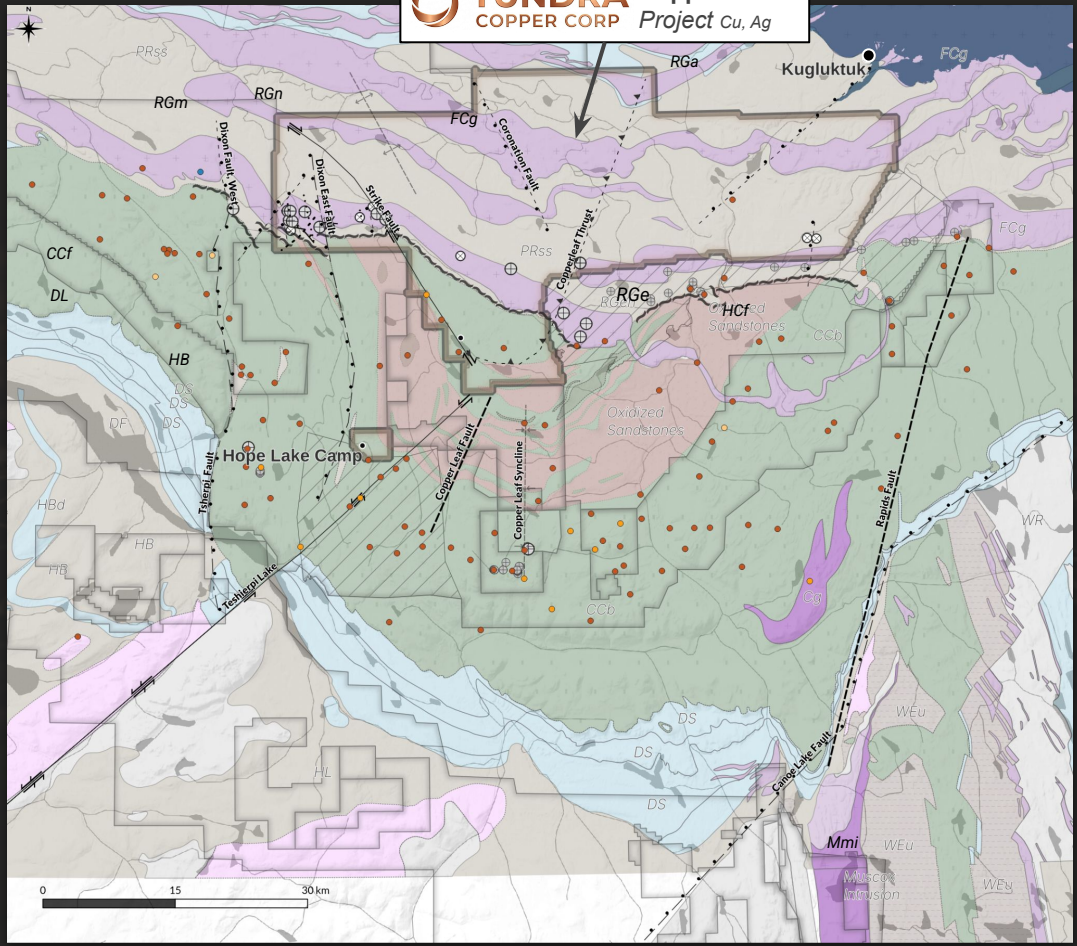
**CCf: Copper Creek Formation**  
3.3km thick | Terrestrial Plateau Basalt | **Native Cu, CC**  
Amygdaloidal flow tops and columnar structure, beds avg 20m

COPPERMINE RIVER GROUP, 1.2-1 Ma

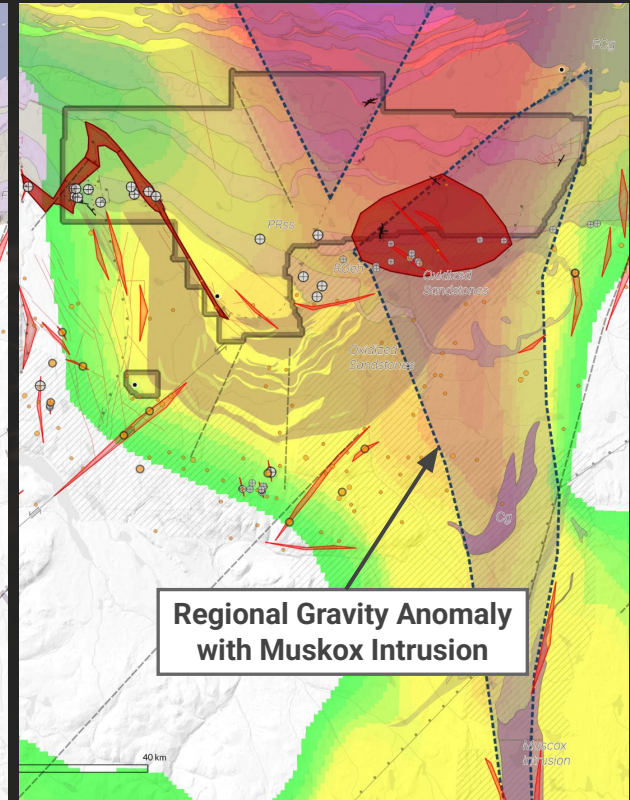
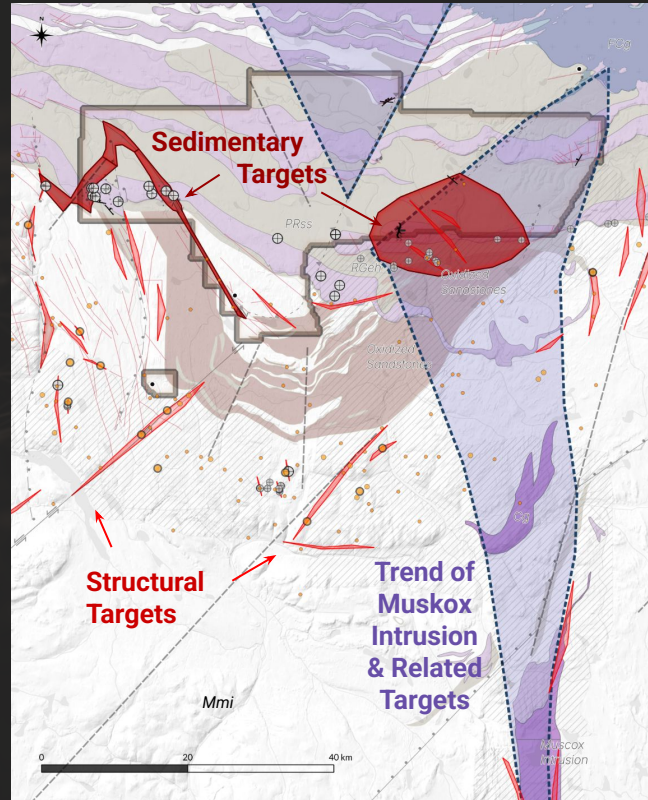
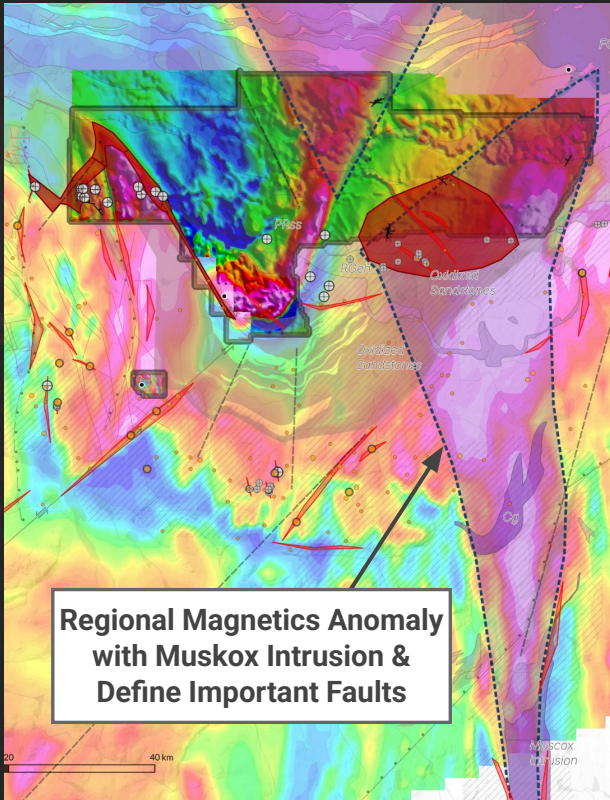
**Mmi: Muskox Intrusion**  
~1.27 Ma | Mackenzie Large Igneous Province | **Cu, NI, PGE**  
Layered gabbro-norite chromite cumulates, grades upward into September Creek formation basalts (CCf: lower Copper Creek formation)

**DL: Dismal Lakes Group**  
~ 1.2 Ma, 1.8km thick | Marine margin  
Carbonaceous sediments, stromatolites, dolostones

**HB: Hornby Bay Group**  
~1.5 Ma, 2.5km thick | Terrestrial sediments  
Sandstones, arenites, pebble conglomerates



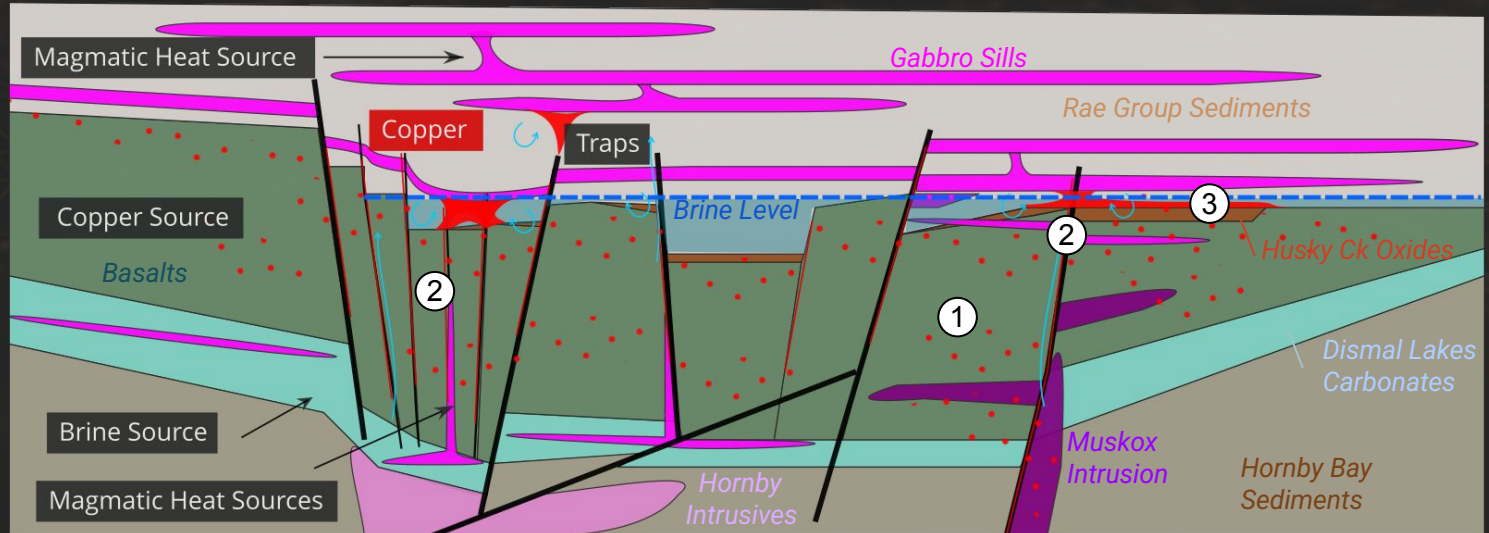
# The Muskox Intrusion forms the roots of the Coppermine rift system



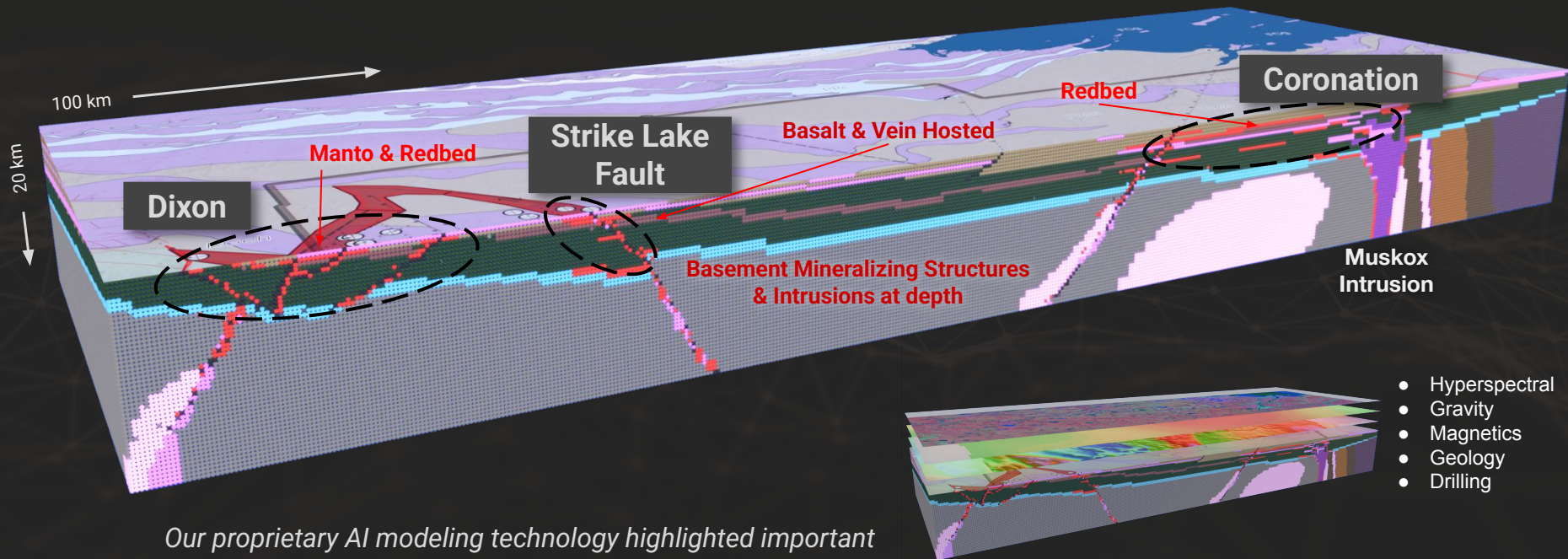


## Three mineralizing events shaped the Coppermine region

- 1) **Muskox and Coppermine River Basalts** sampled copper-rich mantle  
*Native Copper, Disseminated Sulphide*
- 2) **Gabbro sills** push hot brines through copper sources into traps  
*High Grade Veins, Mantos & Chimneys, IOCG/IOA potential*
- 3) **Redbed-style mineralization** evolved in brine fields  
*Bulk tonnage, Tier-1 Style Deposits*

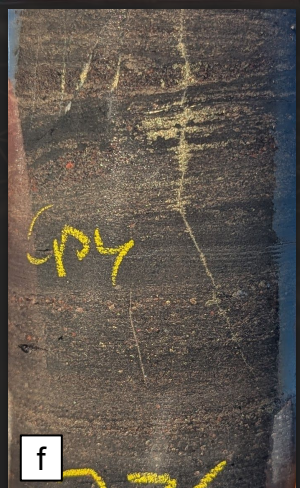
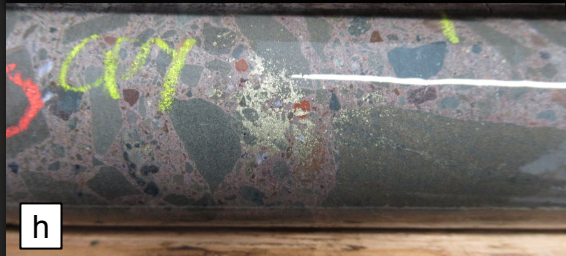
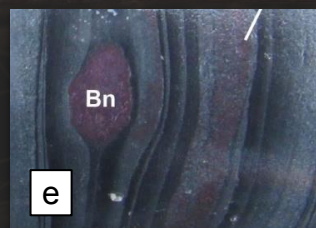
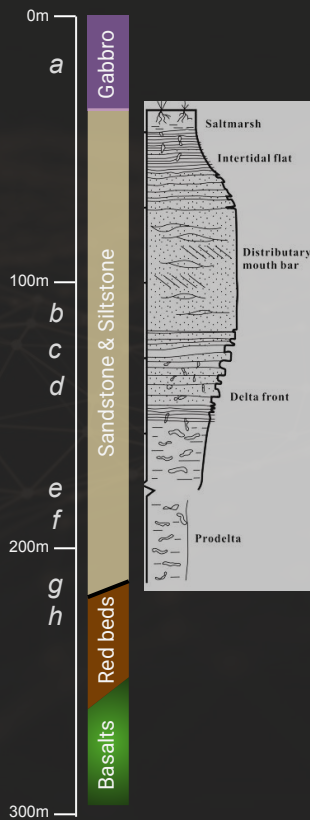


## Tundra's primary mineral targets



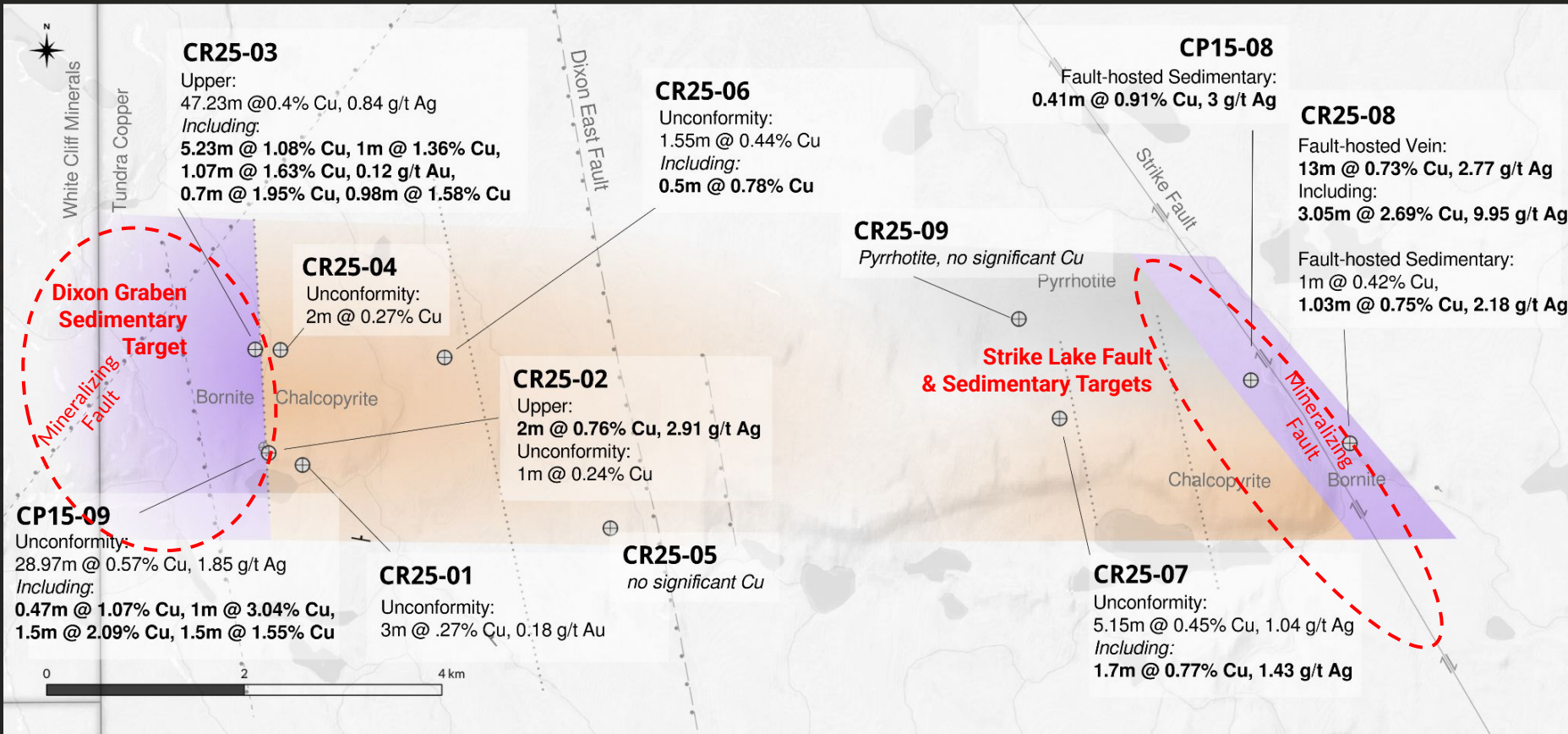
*Our proprietary AI modeling technology highlighted important structures and targets across the entire Coppermine region*

# Drilling intercepted sulphides in every drill hole



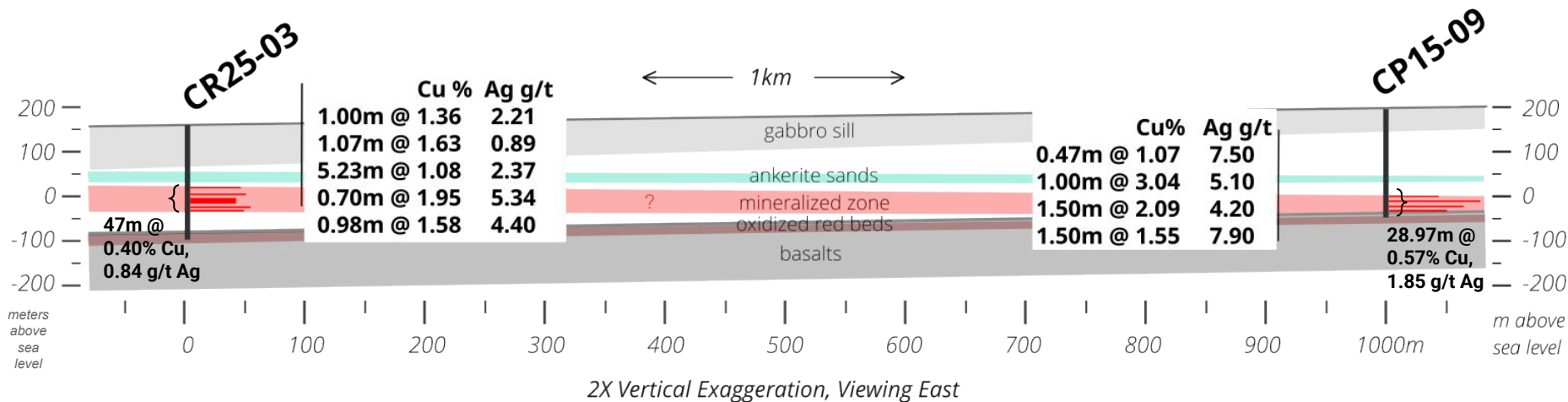


# 2025 Diamond Drill Results



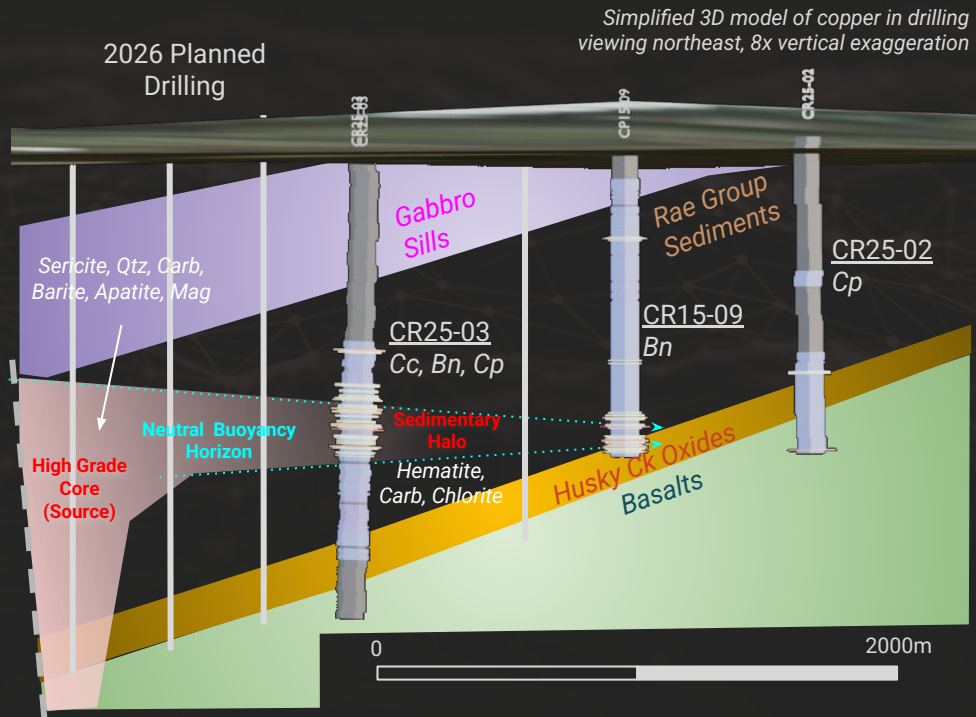
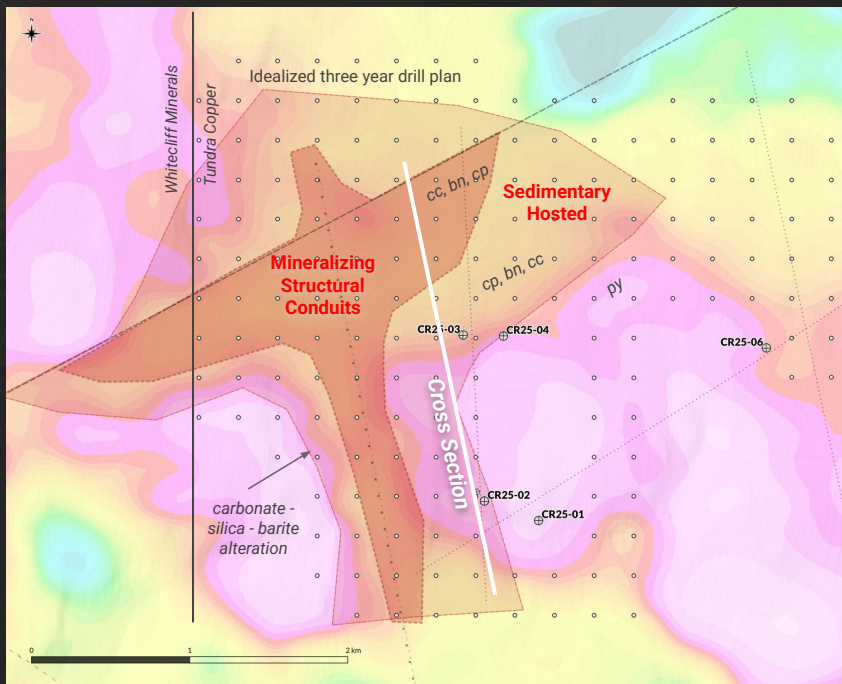
## Dixon Target

- ✓ Sits within a structural graben (basin)
- ✓ Drilled extent is 1.0 km in length with massive potential for expansion
- ✓ Disseminated bornite and chalcocite in multiple high grade horizons > 1.0% copper
- ✓ The target zone is flat lying, 200m depth and crosses geological boundaries
- ✓ Drilling indicates copper sulphides, alteration and width all increase to the NW



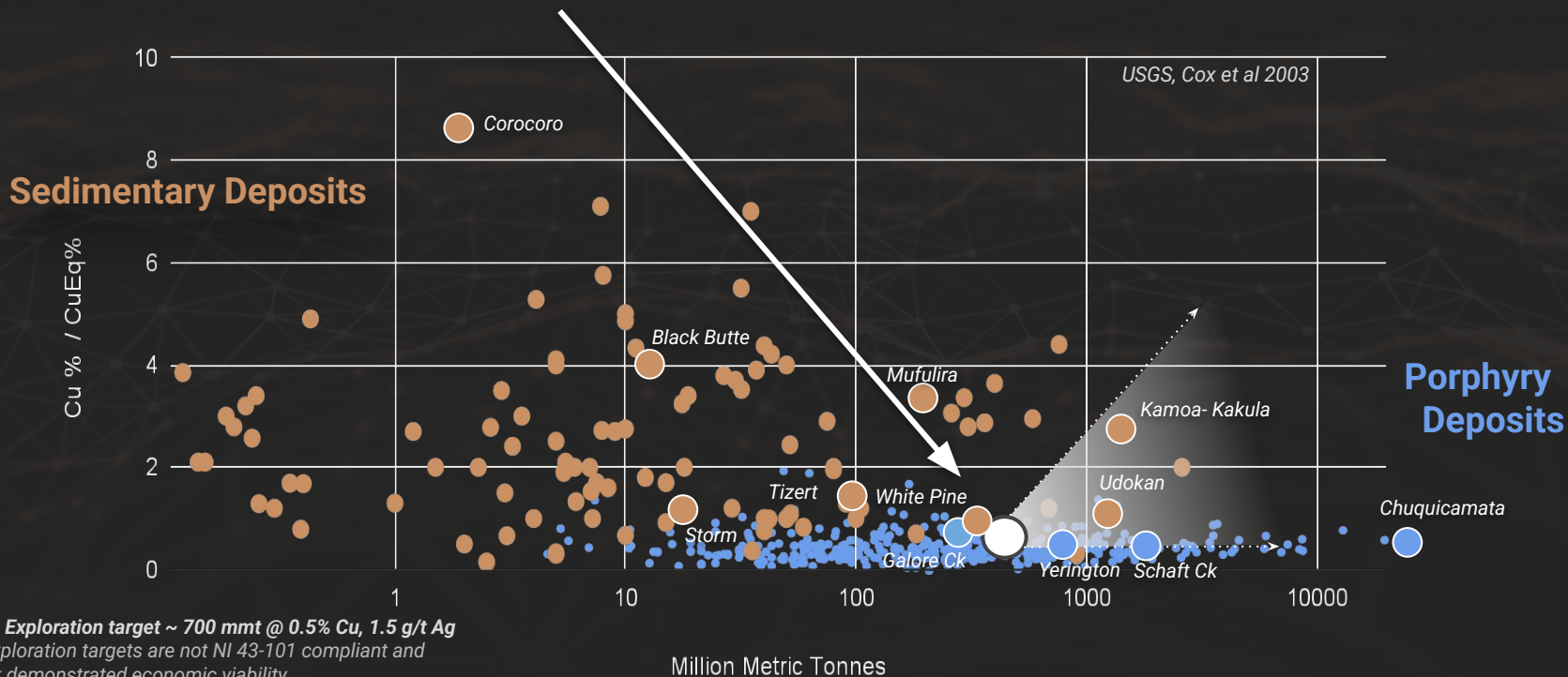
## Dixon Potential

Drilling, copper grades and TDEM geophysical conductivities strongly suggest red-bed style system centralized around structural fluid conduits





With a target size of 3x3km, the Dixon exploration target<sup>\*+</sup> already demonstrates the potential to become a Tier-1 sediment hosted copper system



\* ● Dixon Exploration target ~ 700 mmt @ 0.5% Cu, 1.5 g/t Ag

+ Note: Exploration targets are not NI 43-101 compliant and have not demonstrated economic viability

## The Strike Lake Fault Target

25 km + of mineralization along an important regional structure

- ✓ Consistent high grades at surface

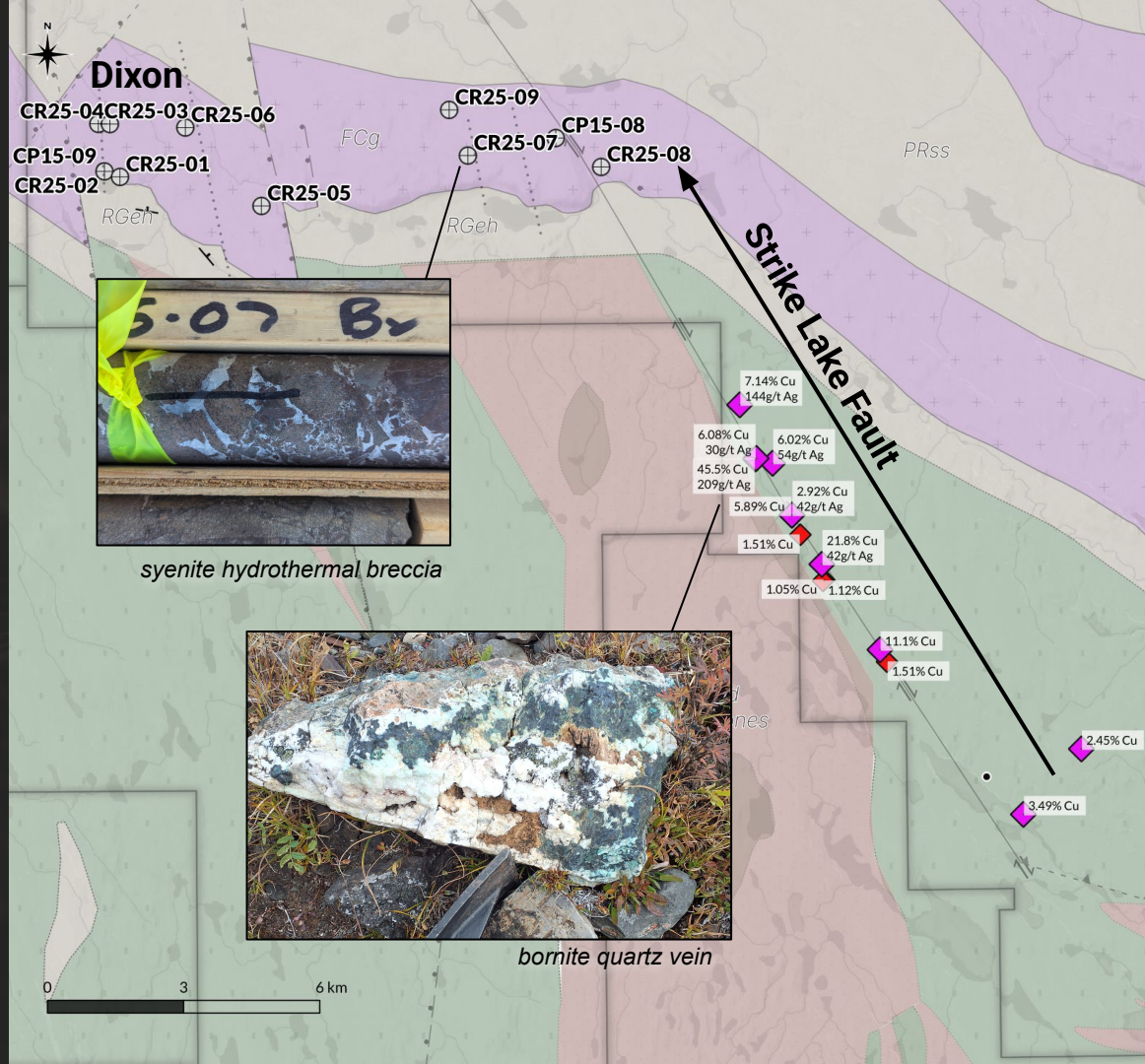
Veins up to 45.5% Cu, 209 g/t Ag  
Chalcocite in sediments 2.45% Cu

- ✓ Mineralization intercepted in drill holes CR25-08 & CP15-08

Veins 13.0m @ 0.73% Cu, 2.77 g/t Ag  
include 3.05m @ 2.69% Cu, 9.95 g/t Ag  
Bornite in sediments 1.03m @ 0.75% Cu, 2.18 g/t Ag

- ✓ Many opportunities for high grade, multi-Mmt deposits

- ✓ Fault continues to the northwest



## Coronation Basin

300km<sup>2</sup> of mineral potential

- ✓ Evidence of widespread Cc, Bn
- ✓ Mineralization intercepted in historic drilling over 18 km

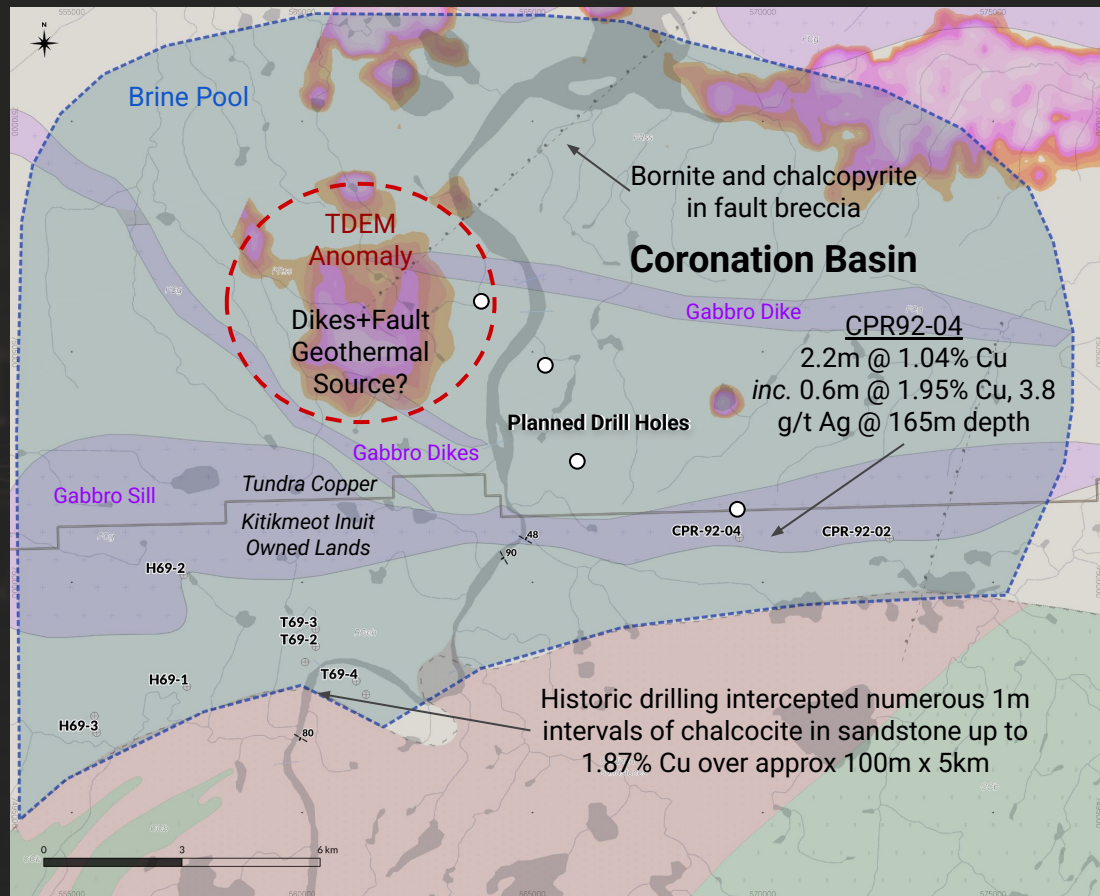
### Cominco drill hole CPR 1992-04

*Cc in conglomerates 2.2m @ 1.04% Cu including 0.6m @ 1.95% Cu, 3.8 g/t Ag from 165m depth*

### Cominco drill hole CPR 1992-02

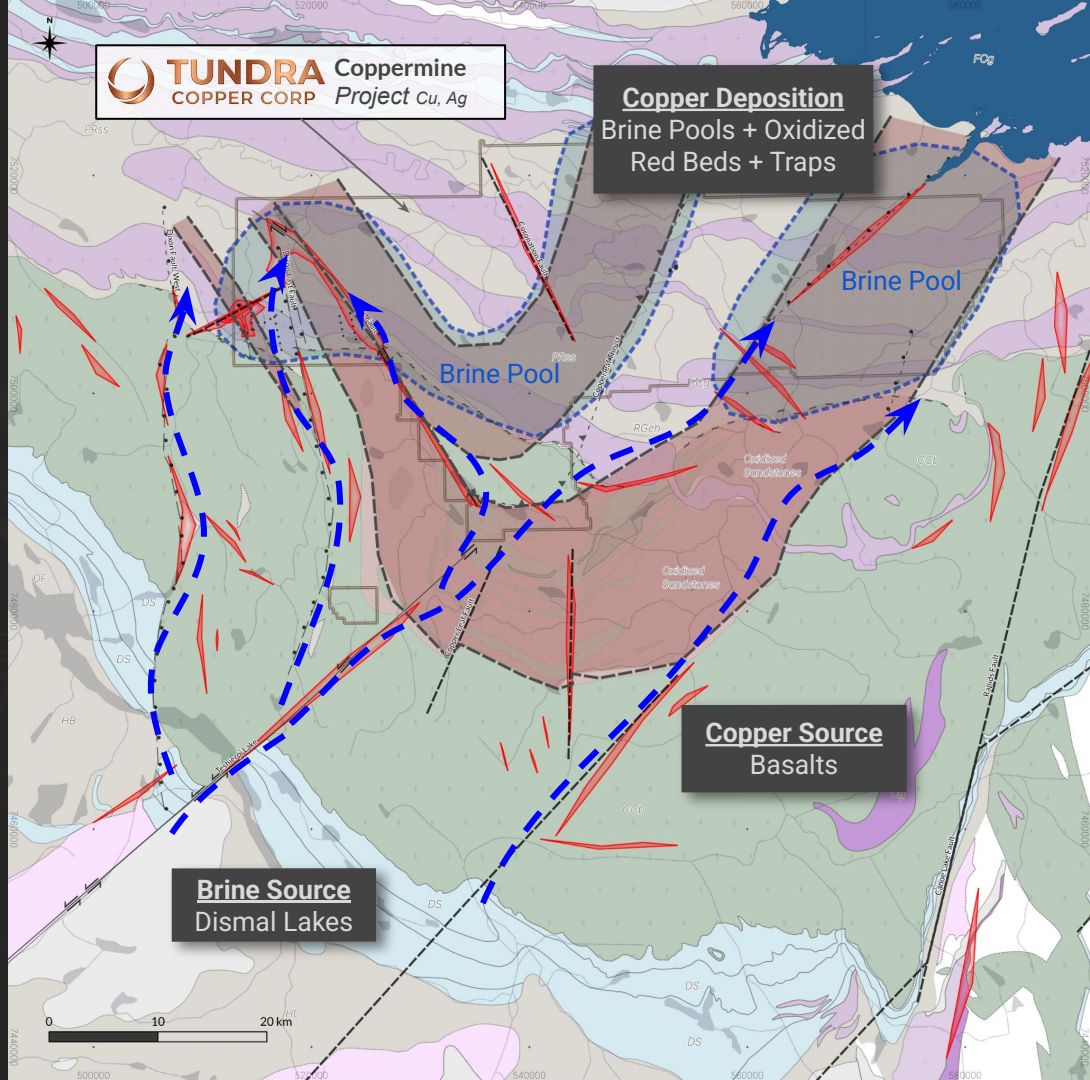
*Cc in conglomerates 2.1m @ 0.45% Cu, 2.84 g/t Ag from 178m depth*

- ✓ High frequency of gabbro dikes
- ✓ Large anomalous TDEM conductive anomaly centralized on faults, dikes



## Tundra's Entire Coppermine Project holds sedimentary-hosted prospectivity at only 0-200m below surface

- Gabbro intrusions used structural conduits, geothermal heat pumps were long lasting (IOCG/IOA potential, eg. Olympic Dam)
- Hot fluids along structures:
  - Copper rich, silica + carbonate + apatite + magnetite
  - In-situ deformation of sand grains overlying mineralizing conduits
- **Neutral density brine model:** all mineralized sedimentary intercepts at +/- 50m from sea level within Rae Group Sediments
- **Exploration: faults + oxidized sediments + gabbro dikes + traps**



## 2026 Proposed Program: \$12M

30 drill holes • 9K meters • 30 line km IP • 100km<sup>2</sup> high resolution ground magnetics  
Large tonnage sedimentary hosted targets • High grade vein targets

### 2025 Accomplishments

Early Stage Test, \$6M

*What did success look like?*

- ✓ Drilled copper mineralization
- ✓ Operated efficiently
- ✓ Identified additional targets
- ✓ Evolved regional geologic model
- ✓ Permitting for growth
- ✓ \$1400/m all-in cost
  - 3,343m @ 9 drill holes
  - 2500 line km TDEM

### 2026 Goals

Grow Project, \$12M

*What does success look like?*

- ✓ Expand Dixon Exploration Target & verify model
- ✓ High grade drill Cu intersections along Strike Fault
- ✓ Drill intersection sed Cu @ Coronation Target
- ✓ Evolve understanding of district through geophysics, mapping and evolving interpretation
- ✓ \$1200/m all-in cost



**TUNDRA**  
COPPER CORP